



NEW SCHOOL NEW START NEW YOU!

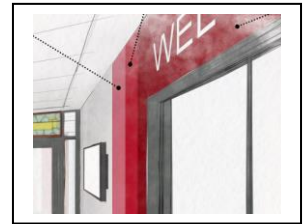
Where do I get help?

Our new school will provide us all with a professional and modern working environment – one that will effectively prepare young people for success in the future by Living out our school motto – **‘Live to Learn and Learn to Live’**. It will also have the people and places to provide you with support when you need it.

Student Enquiries

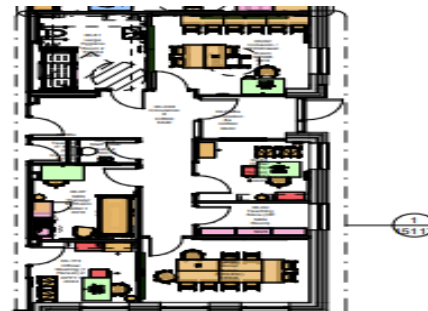
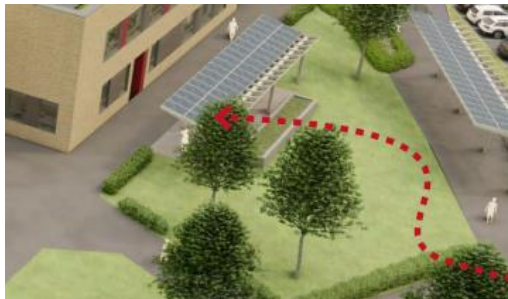
Based at the front of school, designed to be a hub for student support – here you will;

- Be able to enter in the morning Sign in and out during the school day
- Collect lost property
- Collect bus tickets
- Seek first aid help in the attached first aid room
- Access the attendance team



SEND

On the ground floor, the SEND suite of 4 rooms can be accessed from the corridor, or from the outside. It also has its own outside space. In the SEND base you will find the SENDCO, ASENDCO, Teaching Assistants and other support who support learning and personal development.



Learning Resource Centre



Here you can get help with your work before school, in unstructured time and after school. It will be a large bright space, with lots of learning resources for students to complete study independently or in small groups.



NEW SCHOOL NEW START NEW YOU!

Pastoral Support Areas

These will be found around school, they will be in the areas of the form rooms for each year. The year 7 support area will be on the ground floor, the year 8 and 9 on the first floor and the year 10 and 11 area on the top floor.

Staff Workrooms



If you need help with work and your teacher is not in a classroom you might find them in one of the staff workrooms. They are found in the areas close to the classrooms for each department. For example, the maths workroom is on the top floor where the maths classrooms can be found.

Gerard Building

As well as housing Science labs and some ICT facilities the Gerard Building will house our newly designed and staffed Well-being area.

This will be based where the Year 7 office and G5 are now. Our school counsellor will be based here as will the Deputy Safeguarding Lead.



Teague Building

There will be three classrooms in the Teague building for lessons. The Key stage 3 and 4 learning bases will be in the Teague building in the area where SEND is now. New toilets will be built where the year 11 office is currently situated. Academic and pastoral interventions may also take place in the Teague area. The safeguarding Lead's office is based in the Teague building.

